

<b>designation</b>	<b>CENTRALIS receiver RTS</b>
<b>reference</b>	<b>154166B</b>
<b>range</b>	<b>INTEO</b>

**FUNCTIONS**

Control of a Somfy motor by a RTS control or an INIS RT.

Time delay outputs : 3 min

Rolling code (16 million of possibilities) only with an RTS control.

with RTS controls : 16 controls can be memorized in the receiver.

with INIS RT : 1 control can be memorized in the receiver.

you can only program one INIS RT in the memory of a receiver (single control). You cannot program INIS RT and RTS controls together in the memory of a receiver.

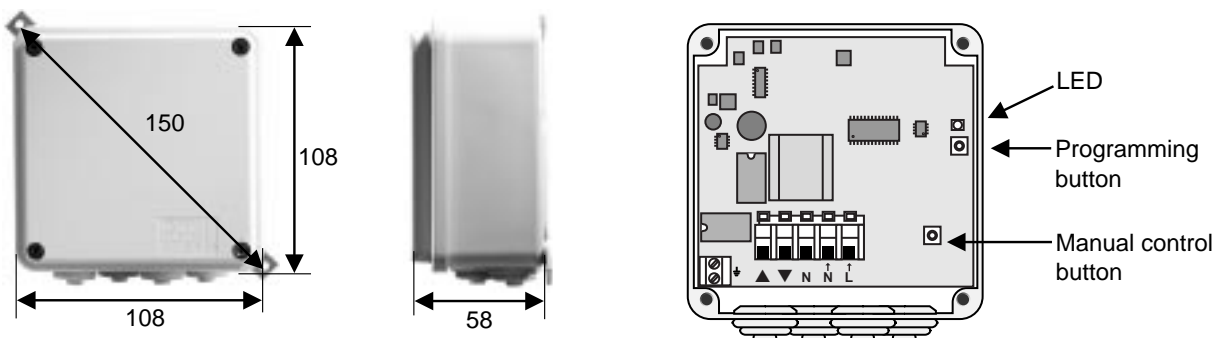
Possibility to set one or two intermediate positions (IP) : one accessible from the top of the awning and one from the bottom.

**TECHNICAL SPECIFICATIONS**

Box	Material	GW PLAST
	Colour	Grey
	Dimensions	108 x 108 x 58 mm
	Protection factor against solid and splashproof	IP44
Supply	nominal limits	220-240 V~ 198-255 V~
	Frequency	50 - 60 Hz
Frequency		433,42 MHz
Standard		EN-60730 ETS-300 220 ETS-300 683
Temperature range	Working	-20°C to +50°C
	Storing	-5°C to +45°C
Connectors		screws
Antenna		Built-in
Output relays		250 V~ 3.15 A
Electromagnetic compatibility	CEI 1000-4-2	8 kV
	CEI 1000-4-3	lev III
	CEI 1000-4-4	lev III
Weight		255g
CE requirements		Yes

## DESCRIPTION

At each control received from a RTS control, the CENTRALIS receiver RTS knows what will be the next code (rolling code) transmitted by this RTS control.



## COMPATIBILITIES AT THE 14/12/99

### IN THE RANGE

- CENTRALIS RTS
- TELIS 1 RTS
- TELIS 4 RTS
- INIS RT
- DIY remote control

### IN THE OTHER RANGES

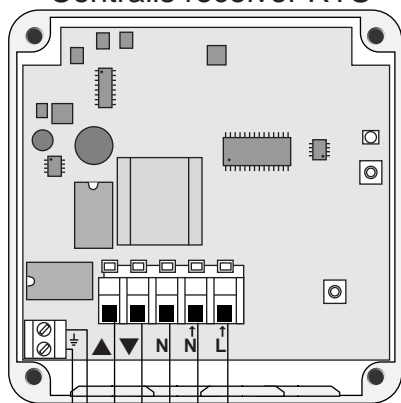
- SL7070
- SL7070 GmbH
- SL2070

### Output :

Group control box 130150, 128617-3 and ML30000.

## WIRING

Centralis receiver RTS



### Installation recommendations :

- Install the receiver with the cables entry pointing downwards to avoid water infiltration.

### For optimum radio performances :

- Do not install the receiver against a metallic part.
- minimum distance between the receiver and the floor : **1,5 m**.
- minimum distance between the receiver and the roof : **30 cm**.
- minimum distance between the receiver and the transmitter : **30 cm**.
- minimum distance between two receivers : **20 cm**.

- ↑ L = Main phase
- ↑ N = Main neutral
- N = Motor neutral
- ▲ = Motor up
- ▼ = Motor down

MAIN  
SUPPLY

Earth  
Phase  
Neutral

